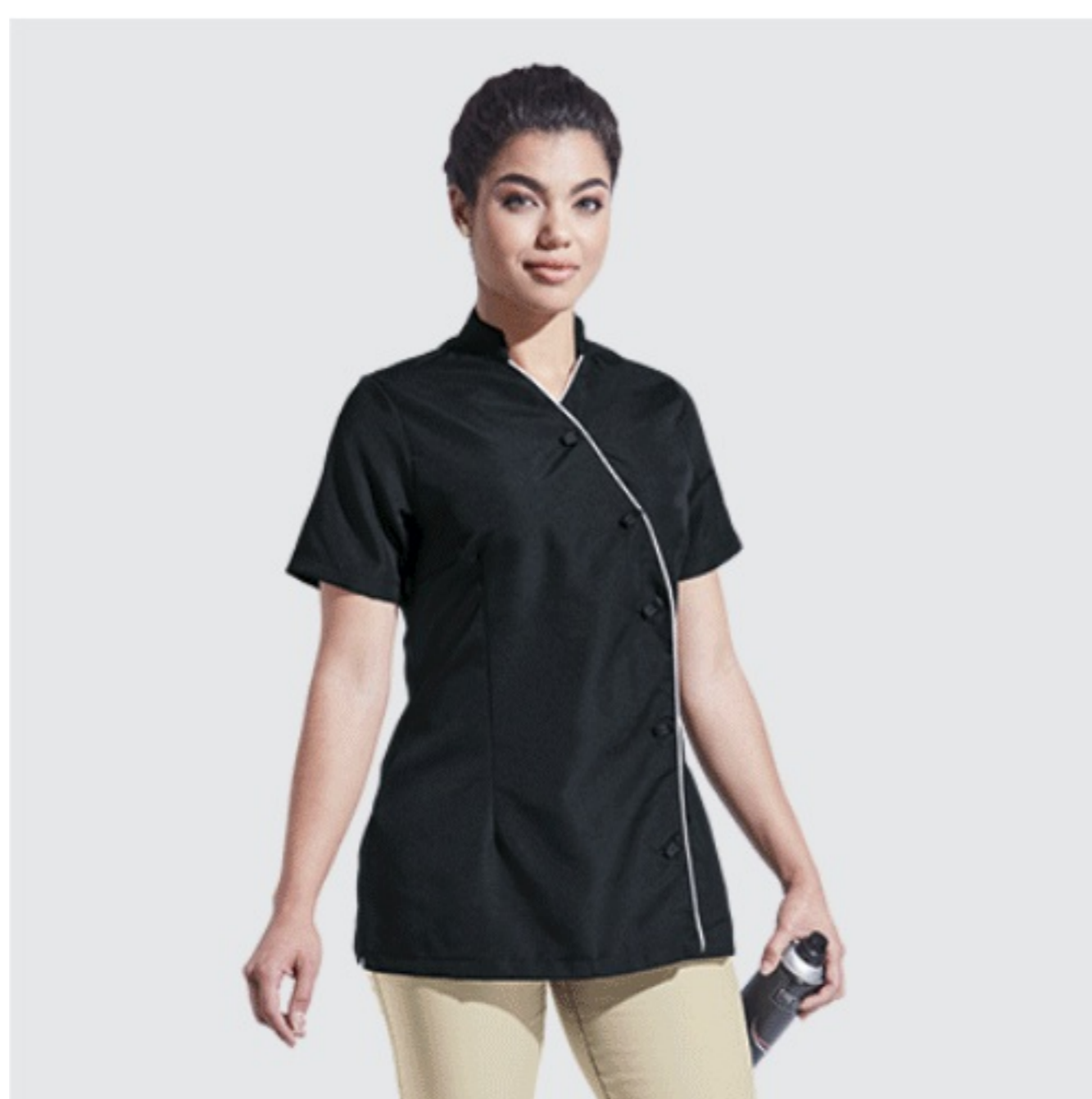


# SERVICE AND BEAUTY



## Ivy Tunic TU-IVY

### FEATURES

175g 100% Polyester.  
Short sleeves.  
Asymmetrical tunic.  
Mandarin collar.  
Buttons and side slits.  
Front and back waist darts.

## Iris Pinafore PIN-IR

### FEATURES

210g 80/20 Poly cotton.  
Perfect pinafore for a variety of industries.  
Adjustable waist tabs .  
Self-fabric binding on the edges.  
Kangaroo pocket divided into multiple compartments.



## Daisy Dress DS-DAI

### FEATURES

175g 100% Polyester.  
Notches at neckline.  
Grown on button stand.  
Princess panels.  
Slanted pockets.  
Comfortable for any work.  
Belt loop and button on the shoulders for detachable epaulettes.  
Epaulettes not supplied.  
Contrast piping at the neck, sleeves and pockets.

## Ladies Poly Cotton 3 Piece Set CS-SET

### FEATURES

210g 80/20 Poly cotton.  
Bust darts.  
Three piece house coat set.  
Set includes a dress, apron and head scarf.  
The dress is adapted from our new Ladies Poly Cotton House Coat.  
Contrast revere collar.  
Grown on button stand.  
Two front patch pockets.  
Two-tone apron and head scarf.



## Barron Loafer Clog SF009

### FEATURES

Slip on unisex clog design.  
Perfect for hospitality and medical field.  
Shock absorbent insole.  
Slip resistant on dry surfaces.  
Water resistant.  
Removable inner sole.  
Upper and outer sole - PVC.  
Insole - PU with Polyester Mesh.  
Thicker inner sole for added comfort.

## Barron Occupational Shoe SF007

### FEATURES

CE EN ISO20347:2011 approved occupational lightweight shoe.  
Single density PU sole.  
Water resistant.  
Anti-static.  
Anti-slip.  
Anti-bacterial insole.  
Oil resistant.  
Unisex.  
Perfect for chefs, hospitals and frontline staff.  
Adjustable elasticated side panel.  
Microfiber upper and higher heel.

